

033326

RECEIVED
LARAMIE COUNTY
CHEYENNE, WY.

CERTIFIED LAND CORNER RECORDATION

'87 AUG 28 AM 9 07

DESCRIPTION OF CORNER EVIDENCE FOUND, AND ORIGINAL RECORD (if known)

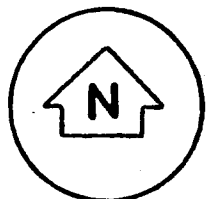
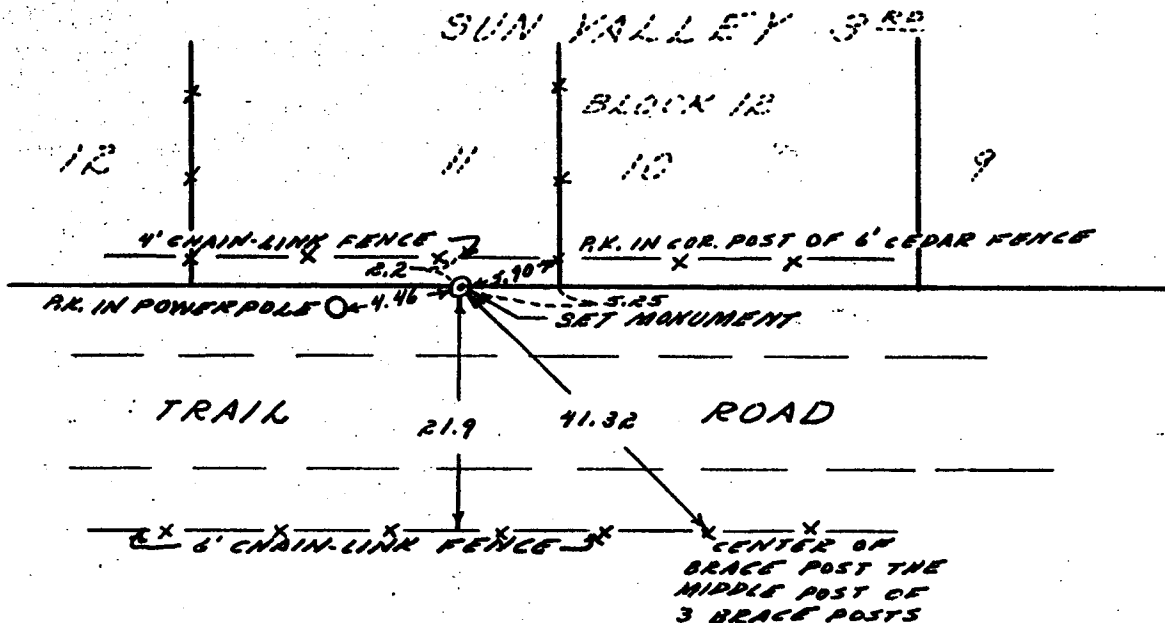
T14N, R66W.
1/4 34
3
T13N.

SET: 2-1/2" x 30" LONG ALUMINUM PIPE WITH 3-1/2" CAP SET FLUSH WITH GROUND AND STAMPED AS SHOWN BELOW
FOUND: 3/4" IRON PIPE 2 FEET BELOW SURFACE, PLACED 3/4" IRON PIPE INSIDE ALUMINUM MONUMENT.

DESCRIPTION OF MONUMENT AND ACCESSORIES ESTABLISHED TO PERPETUATE THE ORIGINAL LOCATION OF THIS CORNER:

SEE TIES BELOW

SKETCH, WITH COURSE AND DISTANCE TO ADJACENT CORNER IF DETERMINED IN THIS SURVEY. (May Sketch or Paste Reproduction on Reverse Side.)



I, JERRY A. STELL certify that I have carefully performed or reviewed the work done on the diagrammed corner as reported on this recordation form and approve the same.

Jerry A. Stell
Signature of Surveyor

L.S. 2500
Registration No.

STATE OF WYOMING,
Office of Clerk and Recorder,
County of Laramie

This "corner record" was filed for record on the 28 day of August, 1987, was noted on the cross-index plat and is assigned page No. _____, of book No. _____

James C. Whitcomb
County Official

Index No. <u>A-15</u>	T. <u>13</u>	R. <u>66</u>	Mer.
<u>2-15</u>	T. <u>14</u>	R. <u>66</u>	Mer.
_____	T. _____	R. _____	Mer.
_____	T. _____	R. _____	Mer.
_____	T. _____	R. _____	Mer.
_____	T. _____	R. _____	Mer.
_____	T. _____	R. _____	Mer.